

7

6

5

4

3

2

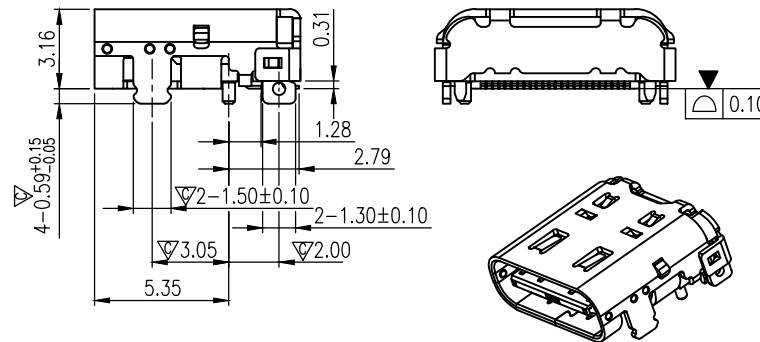
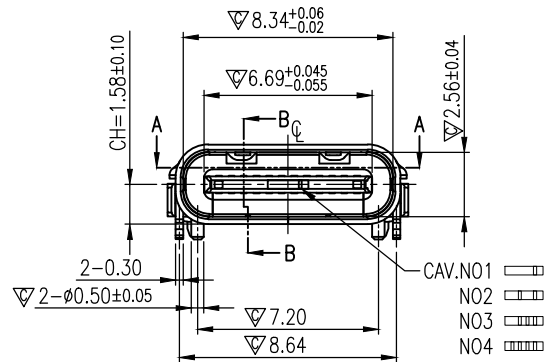
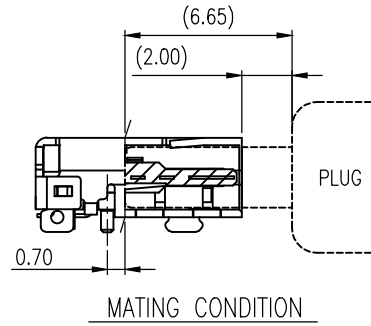
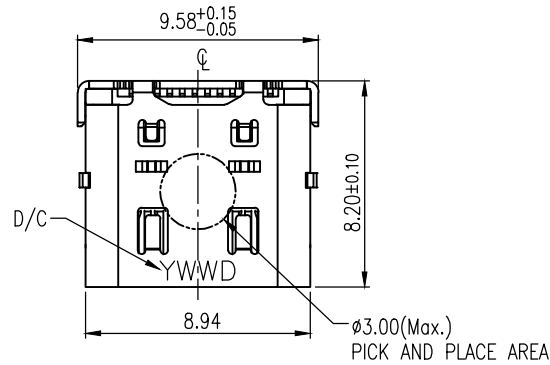
1

REVISIONS

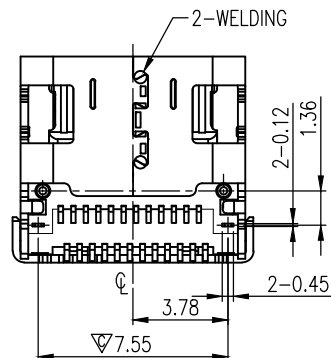
REV	DESCRIPTION	DWN	DATE
A		CHEN	2020-05-29

NOTES:

- MATERIAL:
HOUSING: HIGH TEMPERATURE PLASTIC UL94V-0 COLOR=BLACK.
COLOR: BLACK.
CONTACT TERMINAL: COPPER ALLOY.
GROUND TERMINAL: STAINLESS STEEL.
LATCH: STAINLESS STEEL.
SHELL: STAINLESS STEEL.
MID-PLATE: STAINLESS STEEL.
- FINISH:
CONTACT TERMINAL:
CONTACT AREA: SELECTIVE PLATING;
SOLDERING AREA: GOLD FLASH PLATING. ;
UNDER PLATING: NICKEL PLATING 50." THICKNESS MIN.OVERALL.
GROUND TERMINAL:
SOLDERING AREA: GOLD FLASH PLATING. ;
UNDER PLATING: NICKEL PLATING 10." THICKNESS MIN.OVERALL.
SHELL:
SOLDERING AREA: GOLD FLASH PLATING. ;
UNDER PLATING: NICKEL PLATING 10." THICKNESS MIN.OVERALL.
- PRODUCT SPECIFICATION REFER TO : PS-7787.
- TEST SUMMARY REFER TO : TS-7787.
- THIS PRODUCT DOESN'T CONTAIN ENVIRONMENTAL HAZARDOUS PER DIRECTIVE 2011/65/EU FOR RoHS COMPLIANT OR PER IEC 61249-2-21 FOR HALOGEN-FREE COMPLIANT.
- CRITICAL DIMENSION ▼ SHOULD BE CONTROLLED BY SPC.
- MAJOR DIMENSION ▽ MUST BE CONTROLLED BY QIP.



8. P/N : YMU0791301-3
CONTACT FINISH
30: 30u" Au



GENERAL TOLERANCES (OTHERWISE SPECIFIED)		SCALE NONE	DESIGN UNITS MILIMETER
4 PLS	mm	DRAWN BY Bob	DATE 2019-08-21
3 PLS	± 0.05	CHECKED BY CHEN	DATE 202005-29
2 PLS	± 0.10	APPROVED BY CHEN	DATE 202005-29
1 PLS	± 0.15		
ANGLES	± °	DRAWING NO. YMU0791301-3	
QUALITY SYMBOLS	▽=0		

 譽盛精密工業股份有限公司
Yue Sheng Exact industrial CO; LTD.

TITLE :
USB TYPE C R/A DUAL-ROW SMT TYPE
CH=1.58mm H=3.41mm(New Inner Structure)

PART NO.
YMU0791301-3

THIS DRAWING CONTAINS INFORMATION THAT IS PROPRIETARY TO YUE SHENG CORP, LTD AND SHOULD NOT BE USED WITHOUT WRITTEN PERMISSION

 THIRD ANGLE PROJECTION

DWG REV.	SHEET NO.	SIZE
N	1 OF 3	

7

6

5

4

3

2

1