

7

6

5

4

3

2

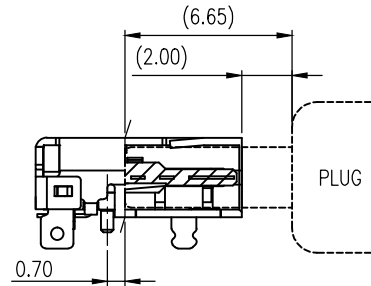
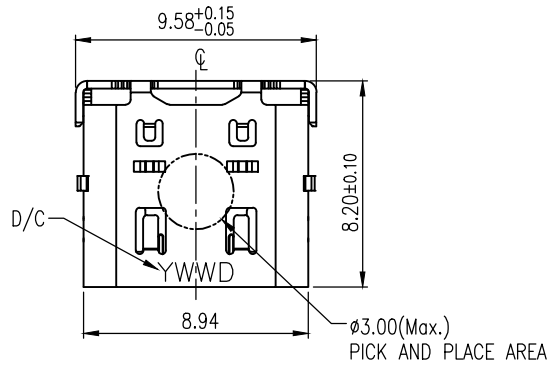
1

REVISIONS

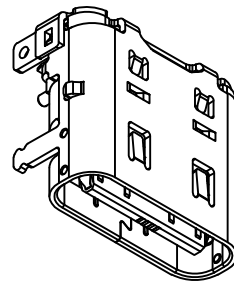
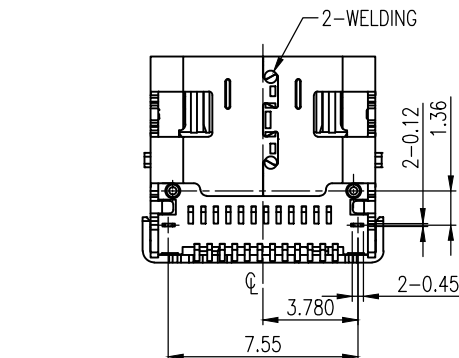
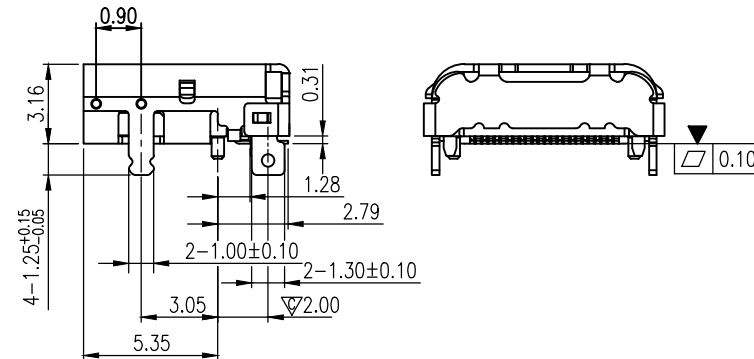
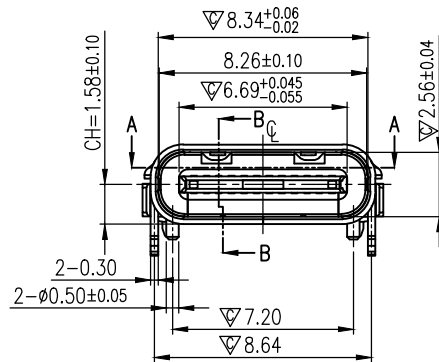
REV	DESCRIPTION	DWN	DATE
A	RELEASE REVISION	CHEN	2020-05-29

NOTES:

- MATERIAL:
HOUSING: HIGH TEMPERATURE PLASTIC , COLOR=BLACK.
CONTACT TERMINAL: COPPER ALLOY .
GROUND TERMINAL: STAINLESS STEEL .
LATCH: STAINLESS STEEL.
SHELL: STAINLESS STEEL.
MID-PLATE: STAINLESS STEEL.
- FINISH:
CONTACT TERMINAL:
CONTACT AREA: SELECTIVE PLATING;
SOLDERING AREA: GOLD FLASH PLATING. ;
UNDER PLATING: NICKEL PLATING 50?" THICKNESS MIN.OVERALL.
GROUND TERMINAL:
SOLDERING AREA: GOLD FLASH PLATING. ;
UNDER PLATING: NICKEL PLATING 10?" THICKNESS MIN.OVERALL.
SHELL:
SOLDERING AREA: GOLD FLASH PLATING. ;
UNDER PLATING: NICKEL PLATING 10?" THICKNESS MIN.OVERALL.
- PRODUCT SPECIFICATION REFER TO : PS-7787.
- TEST SUMMARY REFER TO : TS-7787.
- THIS PRODUCT DOESN'T CONTAIN ENVIRONMENTAL HAZARDOUS PER DIRECTIVE 2011/65/EU FOR RoHS COMPLIANT OR PER IEC 61249-2-21 FOR HALOGEN-FREE COMPLIANT.
- CRITICAL DIMENSION ▼ SHOULD BE CONTROLLED BY SPC.
- MAJOR DIMENSION ▽ MUST BE CONTROLLED BY QIP.



MATING CONDITION



GENERAL TOLERANCES (OTHERWISE SPECIFIED)		SCALE NONE	DESIGN UNITS MILIMETER
4 PLS	mm	DRAWN BY MIKE	DATE 2020-07-06
3 PLS	± 0.05	CHECKED BY BOB	DATE 2020-07-06
2 PLS	± 0.10	APPROVED BY CHEN	DATE 2020-07-06
1 PLS	± 0.15	DRAWING NO. YMU0791301-5	
ANGLES	± °		
QUALITY SYMBOLS	▽=0		

THIS DRAWING CONTAINS INFORMATION THAT IS PROPRIETARY TO YUE SHENG EXACT INDUSTRIAL CO; LTD AND SHOULD NOT BE USED WITHOUT WRITTEN PERMISSION

譽盛精密工業股份有限公司
Yue Sheng Exact industrial CO; LTD.

TITLE :
USB TYPE C R/A DUAL-ROW SMT TYPE
CH=1.58mm H=3.41mm(New Inner Structure)

譽盛料號 : YMU0791301-5

THIRD ANGLE PROJECTION

DWG REV. N
SHEET NO. 1 OF 3
SIZE

7

6

5

4

3

2

1