

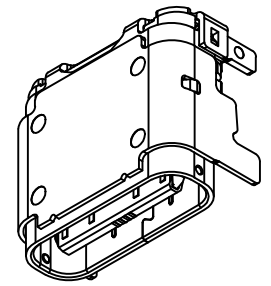
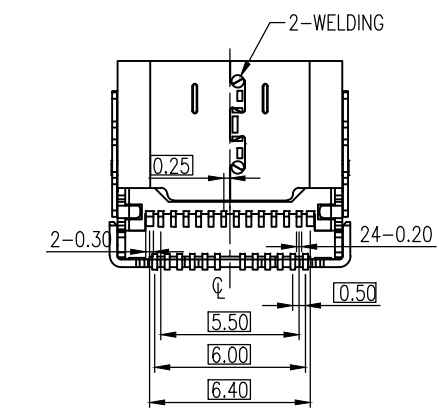
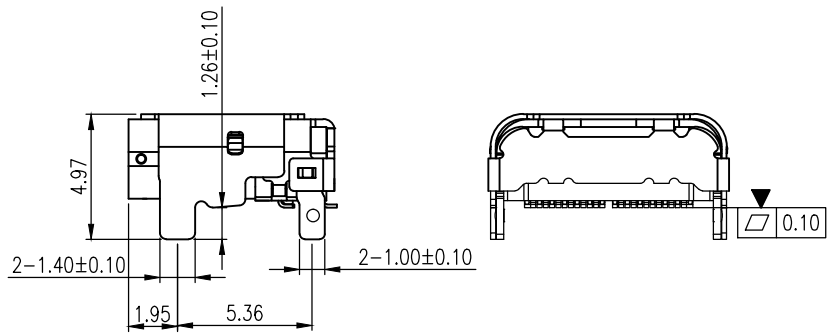
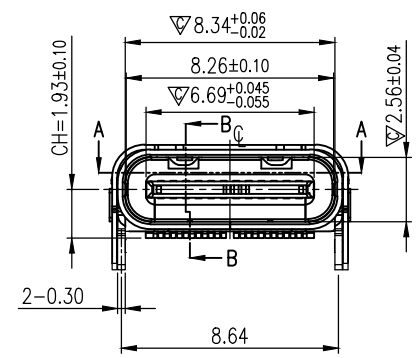
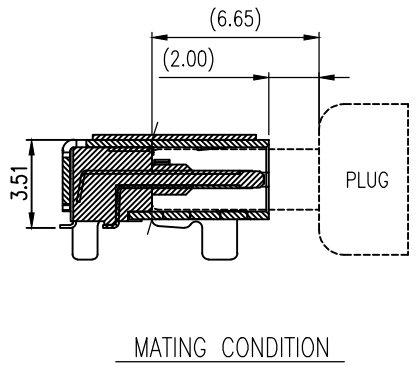
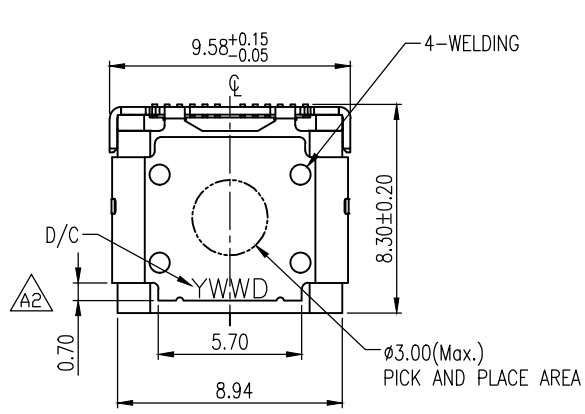
REVISIONS			
REV	DESCRIPTION	DWN	DATE
A	RELEASE REVISION	CHEN	2020-05-29
A2	DESIGN CHANGE OUTER SHELL	CHEN	2020-07-14

NOTES:

- MATERIAL:
HOUSING: HIGH TEMPERATURE PLASTIC , COLOR=BLACK.
CONTACT TERMINAL: COPPER ALLOY .
GROUND TERMINAL: STAINLESS STEEL .
LATCH: STAINLESS STEEL.
INNER SHELL: STAINLESS STEEL.
OUTTER SHELL: STAINLESS STEEL.
MID-PLATE: STAINLESS STEEL.
- FINISH:
CONTACT TERMINAL:
CONTACT AREA: SELECTIVE PLATING;
SOLDERING AREA: GOLD FLASH PLATING. ;
UNDER PLATING: NICKEL PLATING 50. THICKNESS MIN.OVERALL.
GROUND TERMINAL:
SOLDERING AREA: GOLD FLASH PLATING. ;
UNDER PLATING: NICKEL PLATING 10. THICKNESS MIN.OVERALL.
SHELL:
SOLDERING AREA: GOLD FLASH PLATING. ;
UNDER PLATING: NICKEL PLATING 10. THICKNESS MIN.OVERALL.
- PRODUCT SPECIFICATION REFER TO : PS-7607
- TEST SUMMARY REFER TO : TS-7607-XXX
- THIS PRODUCT DOESN'T CONTAIN ENVIRONMENTAL HAZARDOUS PER DIRECTIVE 2011/65/EU FOR RoHS COMPLIANT OR PER IEC 61249-2-21 FOR HALOGEN-FREE COMPLIANT.
- CRITICAL DIMENSION ▼ SHOULD BE CONTROLLED BY SPC.
- MAJOR DIMENSION ▽ MUST BE CONTROLLED BY QIP.

PART NO : YMU0831301

CONTACT FINISH
30: 30u" Au



GENERAL TOLERANCES (OTHERWISE SPECIFIED)		SCALE NONE	DESIGN UNITS MILIMETER
	mm	DRAWN BY MIKE	DATE 2021-05-05
4 PLS		CHECKED BY BOB	DATE 2021-05-05
3 PLS	± 0.05	APPROVED BY CHEN	DATE 2021-05-05
2 PLS	± 0.10	DRAWING NO. YMU0831301	
1 PLS	± 0.15		
ANGLES	± °		
QUALITY SYMBOLS	▽=0		

THIS DRAWING CONTAINS INFORMATION THAT IS PROPRIETARY TO YUE SHENG EXACT INDUSTRIAL CO; LTD AND SHOULD NOT BE USED WITHOUT WRITTEN PERMISSION

譽盛精密工業股份有限公司
Yue Sheng Exact industrial CO; LTD.

TITLE :
USB TYPE C R/A DUAL-ROW SMT TYPE
CH=1.93mm H=3.41mm(New Inner Structure)

Yue Sheng PART NO : YMU0831301

THIRD ANGLE PROJECTION	DWG REV. N	SHEET NO. 1 OF 3	SIZE
------------------------	---------------	---------------------	------